



Garden Walk, London, EC2A

BUTLER & STAG





**\*Physical viewings taking place\***  
**A larger than average one bedroom flat in the heart of the Shoreditch Triangle.**  
**Situated on the fifth floor of this striking looking building, the property is moments away from Old Street (Northern Line) and Liverpool Street Stations offering swift access across the capital.**



- One Bedroom
- 700+sq/ft
- Liverpool Street
- Recently Redecorated
- UNFURNISHED

- One Bathroom
- Shoreditch Triangle
- Communal Terrace
- 5th Floor



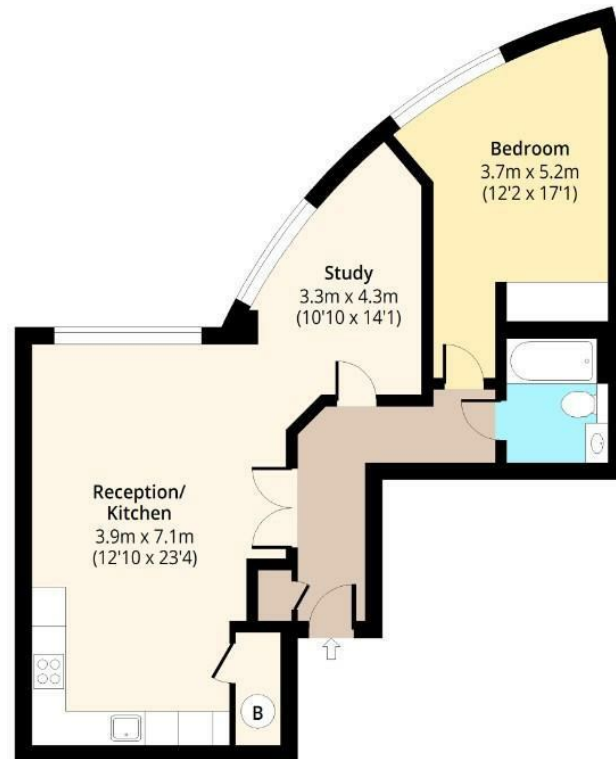




## Garden Walk, EC2A

### Fifth Floor

Approx. 72.18 Sq. meters (777 Sq. feet)



Total area: approx. 72.18 Sq. meters (777 Sq. feet)  
For illustration purposes only - not to scale  
[www.lpaplus.com](http://www.lpaplus.com)

# BUTLER & STAG

☎ 020 8102 1236

🏠 508 Roman Road, Bow, London, E3 5LU

✉ [bow@butlerandstag.com](mailto:bow@butlerandstag.com)

[www.butlerandstag.uk](http://www.butlerandstag.uk)

IMPORTANT NOTICE - These particulars have been prepared in good faith and they are not intended to constitute part of an offer or contract. We have not performed a structural survey on this property and the services, appliances and specific fittings have not been tested. All photographs, measurements, floor plans and distances referred to are given as a guide and should not be relied upon.